

COMMAND  LIGHT

ELEVATE YOUR **SCENE** LIGHTING

SEE THE DIFFERENCE
A LIGHT TOWER MAKES



OUR DIFFERENCE.

DEPLOYMENT

- ✓ Feature a patented (US Patent #5303621) movement, allowing endless positions
- ✓ Can overhang the side of a vehicle in Command Light's exclusive streetlight position
- ✓ Deploys fully in less than 15 seconds with the press of a button
- ✓ Stows quickly with a one-touch auto-park feature

DURABILITY

- ✓ 100% electric, meaning no air or hydraulics
- ✓ Virtually maintenance free and operable in ALL weather conditions
- ✓ NFPA 1901 compliant and tested to winds up to 90 mph
- ✓ Built with aircraft-grade aluminum alloy to add strength while reducing weight

INDUSTRY-LEADING 5-YEAR WARRANTY

Command Light products come with an industry-leading, five-year warranty against any defects in materials and workmanship when used and operated for a period of five years. Excludes malfunctions related to misuse, accident, neglect or normal wear-and-tear, as well as light-producing components (bulbs, lasers, LEDs), which come with their own manufacturer's warranty.

COMMAND LIGHT

WHICH TOWER IS RIGHT FOR YOU?

Command Light specializes in emergency scene lighting, offering a patented light tower design that has been trusted for decades. To help you navigate Command Light's broad lineup, this catalog is organized by tower height (ie. Series), number of heads, power requirements and optional features.

TOW TRUCKS

1 SELECT THE IDEAL SIZE



SHADOW SERIES

SHORTEST TOWER

Pages 4-5



KNIGHT SERIES

MID-SIZE HEIGHT

Pages 6

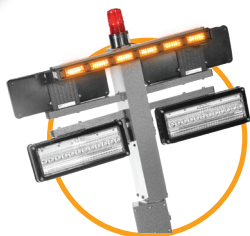


C-LITE

COMPACT LIGHTING

Page 7

2 CHOOSE NUMBER OF HEADS

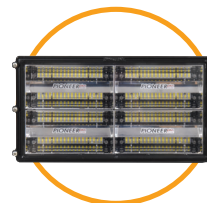


OF HEADS

CHOOSE BETWEEN 2 OR 4

The number of heads will determine how much light you can gather and direct using rotation, angling and optional backlight.

3 CHOOSE YOUR FIXTURE



LIGHT FIXTURES

LED OR QUARTZ HALOGEN

Looking for LEDs (long-lasting lamps at a lower power draw, or quartz halogen (bright fixtures for less cost)? Refer to the **LEDs** and **QUARTZ HALOGEN** labels.

4 CHOOSE YOUR CONTROLS



STANDARD

The Standard Controller comes with a 15 ft (4.5 m) umbilical cord and intuitive buttons, giving crews the ability to control every aspect of the tower and lights.



WIRELESS

Available on any Command Light tower, this optional Wireless Controller has a range of up to 150 ft (45 m) and supplements the Standard Controller.



PANEL-MOUNTED

This Panel-Mounted Controller can be added to a compartment or any protected area. Available on all towers, this option can be used alone or with another controller.



CONTROLS



V-MUX / CLASS 1

Operate your light tower via V-Mux or Class 1 in-cab controls, which supplements the standard controller and is available on all Command Light towers.

5 CHOOSE YOUR OPTIONS



BACKLIGHT

BACKLIGHT

Command Light's backlight option enables the bottom row of lamp heads to rotate 180°, making it possible to light both sides of the scene.



STROBE

TOP-MOUNTED STROBE

Alert oncoming traffic earlier with a strobe mounted on top of the light tower. Available in green, red, amber, blue or clear.



COLOR

CUSTOM COLORS

Optional colors include powder-coated white, red and black. Towers can be wet painted to any color. (Standard: Powder-coated gray.)



CAMERA

TOP-MOUNTED CAMERA

A top-mounted camera provides additional 360° views for apparatus operators, helping keep personnel safe on the fire ground. Choose from the INTEC, Safety Vision or Zone Defense video systems. Learn more about these cameras at commandlight.com/360-vehicle-cameras.



LONG ARM

LONG ARM

Get an additional 2' or 4' of reach with a 65" or 80" long arm.

SL SERIES

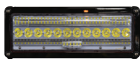
4.5 TO 10-FOOT REACH

4 HEAD

THE SHADOW SERIES are Command Light's most compact units when space is at a premium. These units have a reach of more than 4 feet from its base (or 10' with optional 80" arm), weigh approximately 65 lbs, and are still manufactured using aircraft-grade aluminum alloy for strength. Thanks to this compact size, these units can fit on SUVs, vans and pickup trucks, all the while featuring 355° of rotation.



FRC Evolution



FRC Spectra



Helios



FRC Spectra Max



Lightforce HTX



Whelen Pioneer Plus PCH1



Whelen Pioneer Plus™ PFH2



Whelen Pioneer Plus™ PFP2



Whelen Pioneer Plus PSP1

LEDs	LIGHTING	POWER REQUIREMENTS	OUTPUT (PER LIGHT)	TOTAL OUTPUT	HXWXD (NESTED)	HXWXD (UPRIGHT)	WT.
SL442A-CH	Helios 60w	12V DC + 115V 420w	14,000 lumens	56,000 lumens	8" x 54" x 34" 205 mm x 1,375 mm x 865 mm	55" x 36" x 34" 1,395 mm x 915 mm x 865 mm	75 lbs 35 kg
SL442A-FS	FRC Spectra 220w	12V DC + 115V 1,060w	20,000 lumens	80,000 lumens	8" x 54" x 34" 205 mm x 1,375 mm x 865 mm	55" x 36" x 34" 1,395 mm x 915 mm x 865 mm	
SL442A-FX	FRC Spectra Max 335w	12V DC + 115V 1,520w	28,000 lumens	112,000 lumens	8" x 54" x 34" 205 mm x 1,375 mm x 865 mm	55" x 36" x 34" 1,395 mm x 915 mm x 865 mm	
SL442A-W1	Whelen PSP1 75w	12V DC + 115V 480w	8,517 lumens	34,068 lumens	8" x 54" x 22" 205 mm x 1,375 mm x 559 mm	55" x 36" x 22" 1,395 mm x 915 mm x 559 mm	
SL442A-W2	Whelen Pioneer Plus PFP2 150w	12V DC + 115V 780w	20,442 lumens	81,768 lumens	8" x 54" x 33" 205 mm x 1,375 mm x 835 mm	55" x 36" x 33" 1,395 mm x 915 mm x 835 mm	
SL442D-CH	Helios 60w	12V DC - 35 amps 420w	14,000 lumens	56,000 lumens	8" x 54" x 34" 205 mm x 1,375 mm x 865 mm	55" x 36" x 34" 1,395 mm x 915 mm x 865 mm	75 lbs 35 kg
SL442D-FE	FRC Evolution 160w	12V DC - 70 amps 820w	20,000 lumens	80,000 lumens	8" x 54" x 32" 205 mm x 1,375 mm x 815 mm	55" x 36" x 32" 1,395 mm x 915 mm x 815 mm	
SL442D-FS	FRC Spectra 230w	12V DC - 90 amps 1,100w	20,000 lumens	56,000 lumens	8" x 54" x 34" 205 mm x 1,375 mm x 865 mm	55" x 36" x 34" 1,395 mm x 915 mm x 865 mm	
SL442D-FX	FRC Spectra Max 230w	12V DC - 92 amps 1,100 w	28,000 lumens	112,000 lumens	8" x 54" x 34" 205 mm x 1,375 mm x 865 mm	55" x 36" x 34" 1,395 mm x 915 mm x 865 mm	
SL442D-LX	Lightforce HTX LED/HID 150w	12V DC - 60 amps 780w	13,500 lumens	54,000 lumens	8" x 56" x 23" 203 mm x 1,422 mm x 584 mm	57" x 46" x 23" 1,448 mm x 1,169 mm x 584 mm	
SL442D-W1	Whelen Pioneer Plus PCH1 75w	12V DC* - 70 amps 480w	10,130 lumens	40,520 lumens	8" x 54" x 22" 205 mm x 1,375 mm x 559 mm	55" x 36" x 22" 1,395 mm x 915 mm x 559 mm	
SL442D-W2	Whelen Pioneer Plus PFH2 150w	12V DC* - 70 amps 780w	20,261 lumens	81,044 lumens	8" x 54" x 33" 205 mm x 1,375 mm x 835 mm	55" x 36" x 33" 1,395 mm x 915 mm x 835 mm	



FRC Focus



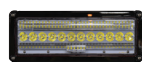
Lumenform

QUARTZ HALOGEN	LIGHTING	POWER REQUIREMENTS	OUTPUT (PER LIGHT)	TOTAL OUTPUT	HXWXD (NESTED)	HXWXD (UPRIGHT)	WT.
SL447A-FF	FRC Focus 750w	12V DC + 115V 3,180w	19,600 lumens	78,400 lumens	8" x 54" x 23" 205 mm x 1,375 mm x 585 mm	49.5" x 52" x 23" 1,260 mm x 1,320 mm x 585 mm	70 lbs 32 kg
SL445A-LF	Lumenform 500w	12V DC + 115V 2,180w	11,100 lumens	44,400 lumens	8" x 54" x 22" 205 mm x 1,375 mm x 560 mm	55" x 36" x 22" 1,395 mm x 915 mm x 560 mm	

2 HEAD



FRC Evolution



FRC Spectra



Helios



Whelen Pioneer Plus™ PCH1



Whelen Pioneer Plus™ PFH2



Whelen Pioneer Plus™ PFP2



FRC Spectra Max

LEDs	LIGHTING	POWER REQUIREMENTS	OUTPUT (PER LIGHT)	TOTAL OUTPUT	HXWXD (NESTED)	HXWXD (UPRIGHT)	WT.
SL422A-CH	Helios 60w	12V DC + 115V 300w	14,000 lumens	28,000 lumens	8" x 54" x 34" 205mm x 1,375 mm x 865 mm	55" x 36" x 34" 1,395 mm x 915 mm x 865 mm	70 lbs 32 kg
SL422A-FS	FRC Spectra 220w	12V DC + 115V 620w	20,000 lumens	40,000 lumens	8" x 54" x 34" 205mm x 1,375 mm x 865 mm	55" x 36" x 34" 1,395 mm x 915 mm x 865 mm	
SL422A-FX	FRC Spectra Max 335w	12V DC + 115V 850w	28,000 lumens	56,000 lumens	8" x 54" x 34" 205mm x 1,375 mm x 865 mm	55" x 36" x 34" 1,395 mm x 915 mm x 865 mm	
SL422A-W2	Whelen Pioneer Plus PFP2 150w	12V DC + 115V 480w	20,442 lumens	40,884 lumens	8" x 54" x 33" 205mm x 1,375 mm x 840 mm	55" x 36" x 33" 1,395 mm x 915 mm x 840 mm	
SL422D-FE	FRC Evolution 160w	12V DC – 35 amps 500w	20,000 lumens	40,000 lumens	8" x 54" x 32" 205 mm x 1,375 mm x 815 mm	55" x 36" x 32" 1,395 mm x 915 mm x 815 mm	65 lbs 30 kg
SL422D-FS	FRC Spectra 230w	12V DC – 42 amps 620w	20,000 lumens	40,000 lumens	8" x 54" x 34" 205 mm x 1,375 mm x 865 mm	55" x 36" x 34" 1,395 mm x 915 mm x 865 mm	
SL422D-FX	FRC Spectra Max 335w	115V or 230V AC 670w	28,000 lumens	56,000 lumens	8" x 54" x 34" 205mm x 1,375 mm x 865 mm	55" x 36" x 34" 1,395 mm x 915 mm x 865 mm	
SL422D-W1	Whelen Pioneer Plus PCH1 75w	12V DC* – 20 amps 330w	10,130 lumens	20,260 lumens	8" x 54" x 22" 205 mm x 1,375 mm x 560 mm	55" x 36" x 22" 1,395 mm x 915 mm x 560 mm	
SL422D-W2	Whelen Pioneer Plus PFH2 150w	12V DC* – 35 amps 480w	20,261 lumens	40,522 lumens	8" x 54" x 33" 205 mm x 1,375 mm x 840 mm	55" x 36" x 33" 1,395 mm x 915 mm x 840 mm	

STRAIGHT SHADOW



STROBE



COLOR



CONTROLS



AVAILABLE IN 2-, 3- AND 4-HEAD CONFIGURATIONS



Helios



Whelen Pioneer Plus™ PFH2



Whelen Pioneer Plus™ PFP2

The Straight Shadow is Command Light's most economical solution in maintaining efficient scene lighting. Featuring only elevated capabilities (and not rotation), this unit offers a 3.5' reach from its base. The Straight Shadow can also be easily modified to elevate cameras and antennas.

LEDs	LIGHTING	POWER REQUIREMENTS	OUTPUT (PER LIGHT)	TOTAL OUTPUT	HXWXD (NESTED)	HXWXD (UPRIGHT)	WT.
SS322A-CH	(2) Helios 60w	12V DC + 115V 240w	14,000 lumens	28,000 lumens	9" x 42" x 30" 230 mm x 1,065 mm x 762 mm	42.5" x 45" x 30" 1,080 mm x 1,143 mm x 762 mm	45 lbs 20 kg
SS322A-W2	(2) Whelen PFP2 150w	12V DC + 115V 400w	20,442 lumens	40,884 lumens	9" x 42" x 30" 230 mm x 1,065 mm x 762 mm	42.5" x 45" x 30" 1,080 mm x 1,143 mm x 762 mm	
SS322D-CH	(2) Helios 60w	12V DC – 20 amps 240w	14,000 lumens	28,000 lumens	9" x 42" x 30" 230 mm x 1,065 mm x 762 mm	43" x 45" x 30" 1,092 mm x 1,143 mm x 762 mm	45 lbs 20 kg
SS322D-W2	(2) Whelen Pioneer Plus PFH2 - 150w	12V DC – 34 amps 420w	20,261 lumens	40,522 lumens	8" x 42" x 30" 205 mm x 1,067 mm x 760 mm	43" x 45" x 30" 1,092 mm x 1,143 mm x 760 mm	



Lumenform

QUARTZ HALOGEN	LIGHTING	POWER	OUTPUT (PER LIGHT)	TOTAL OUTPUT	HXWXD (NESTED)	HXWXD (UPRIGHT)	WT.
SS335A-LF	(3) Lumenform 500w	12V DC + 115V 1,620w	11,100 lumens	33,300 lumens	9" x 42" x 26" 230 mm x 1,065 mm x 660 mm	42.5" x 44.75" x 26" 1,080 mm x 1,135 mm x 660 mm	40 lbs 18 kg
SS345A-LF	(4) Lumenform 500w	12V DC + 115V 2,120w	11,100 lumens	44,400 lumens	8" x 42" x 25" 205 mm x 1,065 mm x 635 mm	44" x 44.75" x 25" 1,120 mm x 1,135 mm x 635 mm	45 lbs 20 kg

KL SERIES

7.5 TO 10-FOOT REACH

THE KNIGHT SERIES, Command Light's mid-size tower, delivers a reach of nearly 7.5 feet from its base. Like the CL Series, these units are manufactured using aircraft-grade aluminum but are roughly half the weight of their taller counterpart, making these towers ideal for apparatus with limited space. The series also includes the KL Slim, a narrow tower with a small 53" x 13" footprint, perfect for tight dunnage areas or high-side aerial compartments.

4 HEAD



FRC Evolution



FRC Spectra



FRC Spectra Max



Lightforce HTX



Whelen Pioneer Plus PFH2



NESTED POSITION

LEDs	LIGHTING	POWER REQUIREMENTS	OUTPUT (PER LIGHT)	TOTAL OUTPUT	HXWXD (NESTED)	HXWXD (UPRIGHT)	WT.
KL415D-FE	FRC Evolution 160w	12V DC – 60 amps 940w	20,000 lumens	80,000 lumens	14" x 47" x 31" 355 mm x 1,195 mm x 787 mm	87.5" x 52" x 31" 2,225 mm x 1,320 mm x 787 mm	165 lbs 75 kg
KL415D-FS	FRC Spectra 220w	12V DC – 84 amps 1,180w	20,000 lumens	80,000 lumens	12" x 47" x 34" 305 mm x 1,195 mm x 865 mm	87.5" x 52" x 34" 2,225 mm x 1,320 mm x 865 mm	
KL415D-FX	FRC Spectra Max 230W	12V DC – 100 amps 1,220w	28,000 lumens	112,000 lumens	12" x 47" x 34" 305 mm x 1,195 mm x 865 mm	87.5" x 52" x 34" 2,225 mm x 1,320 mm x 865 mm	
KL415D-LX	Lightforce HTX LED/HID 150w	12V DC – 60 amps 900w	13,500 lumens	54,000 lumens	14" x 47" x 31" 355 mm x 1,195 mm x 787 mm	87.5" x 52" x 31" 2,225 mm x 1,320 mm x 787 mm	
KL415D-W2	Whelen Pioneer Plus PFH2 150w	12V DC – 63 amps 900w	20,261 lumens	81,044 lumens	12" x 47" x 34" 305 mm x 1,195 mm x 865 mm	87.5" x 52" x 34" 2,225 mm x 1,320 mm x 865 mm	

KL SERIES SLIM



NESTED POSITION



HiViz 270w



HiViz 60w



STROBE*



CAMERA*



COLOR



CONTROLS

* On this DC tower, amperage only allows for one of these options.

THE KNIGHT SLIM delivers the Knight Series smallest footprint, stowing flat at just 12" x 13" x 53" thanks to this narrow design, ideal for smaller to mid-size apparatus, or larger trucks with limited space. This compact tower packs a total output of 70,000 lumens thanks to HiViz fixtures.



LEDs	LIGHTING	POWER	OUTPUT (PER LIGHT)	TOTAL OUTPUT	HXWXD (NESTED)	HXWXD (UPRIGHT)	WT.
KL409D-H4	(2) HiViz – 270w (2) HiViz – 60w	12V DC - 960w	270w: 28,500 60w: 6,500	70,000 lumens	12" x 13" x 53" 305 mm x 330 mm x 1,346 mm	87.5" x 13" x 53" 2,225 mm x 330 mm x 1,346	165 lbs 75 kg

Knight Slim requires 18" x 7" x 5" electrical box (mounted nearby).

THE C-LITE is a versatile, compact unit that boasts a LED spotlight/floodlight combo, creating a concentrated beam that allows the operator to illuminate areas not typically reached by fixed lights. The C-Lite has the ability to tilt up to 120° and even rotate with an optional platform. This unit's small, lightweight design can be mounted vertically or horizontally, perfect for aerial tip illumination, command vehicle lighting and utility industry applications, like farming, ranching, towing, maintenance and more.

C-LITE

COMPACT LIGHTING



CONTROLS



MANUAL OR
ELECTRIC
ROTATION

OPTIONS (SEE PAGE 5 FOR DESCRIPTIONS)

FRC Spectra



FRC Mini Spectra



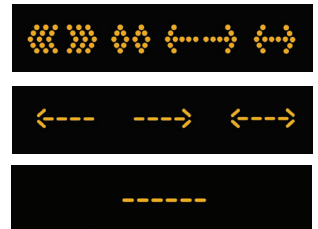
Whelen Pioneer Plus PCH1



LEDs	LIGHTING	POWER REQUIREMENTS	OUTPUT (PER LIGHT)	TOTAL OUTPUT	HXWXD (NESTED)	HXWXD (UPRIGHT)	WT.
CD113D-FS	(1) FRC Spectra 220w	12V DC - 19 amps 300w	20,000 lumens	20,000 lumens	9" x 14" x 19" 229 mm x 355 mm x 483 mm	21" x 14" x 19" 533 mm x 355 mm x 483 mm	30 lbs 14 kg
CD128D-FN	(2) FRC Mini Spectra 130w	12V DC - 19 amps 240w	14,000 lumens	28,000 lumens	9" x 19" x 19" 229 mm x 483 mm x 470 mm	21" x 26" x 19" 533 mm x 660 mm x 470 mm	
CD127D-W1	(2) Whelen Pioneer Plus PCH1 75w	12V DC - 19 amps 230w	10,130 lumens	20,260 lumens	9" x 19" x 19" 229 mm x 483 mm x 470 mm	21" x 19" x 19" 508 mm x 482 mm x 482 mm	

TRAFFIC FLOW BOARDS

TRAFFIC FLOW BOARDS With rotational capabilities and multiple arrow patterns, Command Light's Traffic Flow Boards significantly improve on-scene visibility and responder safety. Available in six different models (based on deployment and traffic pattern features), these units conserve space when stowed, while the versatile mounting system gives crews the ability to select various boards to conform to department requirements. Each model comes with standard rotation, giving crews the ability to position traffic advisory arrows toward traffic to maximize effectiveness during blocking modes.



LEDs	MOVEMENT	TRAFFIC PATTERN	POWER REQUIREMENTS	HXWXD (NESTED)	HXWXD (UPRIGHT)	WT.
TFB-V7	Vertical pop-up, recessed in apparatus	Greatest variety of traffic patterns	12V DC - 7 amps	43" x 64" x 13" 1,092 mm x 1,626 mm x 330 mm	75" x 64" x 13" 1,905 mm x 1,626 mm x 330 mm	220 lbs 100 kg
TFB-H7	Fold-down design	Greatest variety of traffic patterns	12V DC - 5 amps	16" x 60" x 46" 406 mm x 1,524 mm x 1,168 mm	44" x 60" x 66" 1,118 mm x 1,524 mm x 1,676 mm	150 lbs 68 kg
TFB-V5	Vertical pop-up, recessed in apparatus	Essential traffic patterns	12V DC - 5 amps	28" x 44" x 13" 711 mm x 1,118 mm x 330 mm	43" x 44" x 13" 1,092 mm x 1,118 mm x 330 mm	150 lbs 68 kg
TFB-H5	Fold-down design	Essential traffic patterns	12V DC - 5 amps	8" x 48" x 40" 203 mm x 1,219 mm x 1,106 mm	52" x 70" x 40" 1,321 mm x 1,778 mm x 1,016 mm	80 lbs 36 kg
TFB-CL5	Fold-down design, mounted to a CL Series tower	Essential traffic patterns	12V DC - 5 amps + tower requirements	Variable based on tower selection	Variable based on tower selection	28 lbs + tower
TFB-SL3	Fold-down design, mounted to a Shadow Series tower	Directional light bar	12V DC - 5 amps + tower requirements	Variable based on tower selection	Variable based on tower selection	14 lbs + tower

COMMAND LIGHT



COMMANDLIGHT.COM.COM | 800.797.7974 | 3842 REDMAN DR. FORT COLLINS CO 80524

See a Command Light representative or authorized dealer for details. All information in this brochure is the latest available at the time of publication. Printed in the USA. 2.5K 1019 ©2019 Command Light